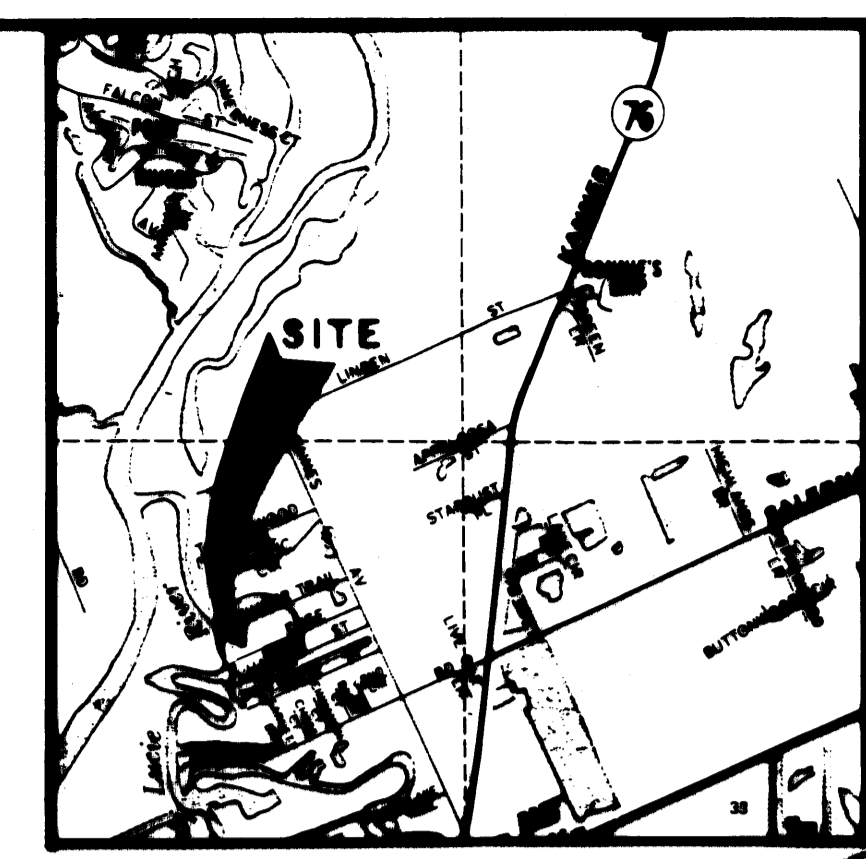


A PLAT OF FRISCH'S LANDING

LYING IN THE HANSON GRANT
BEING A REPLAT OF A PORTION OF TRACT 3
BLOCK 40, ST. LUCIE INLET FARMS
AS RECORDED IN PLAT BOOK 1, PAGE 98
PALM BEACH (NOW MARTIN) COUNTY, FLORIDA

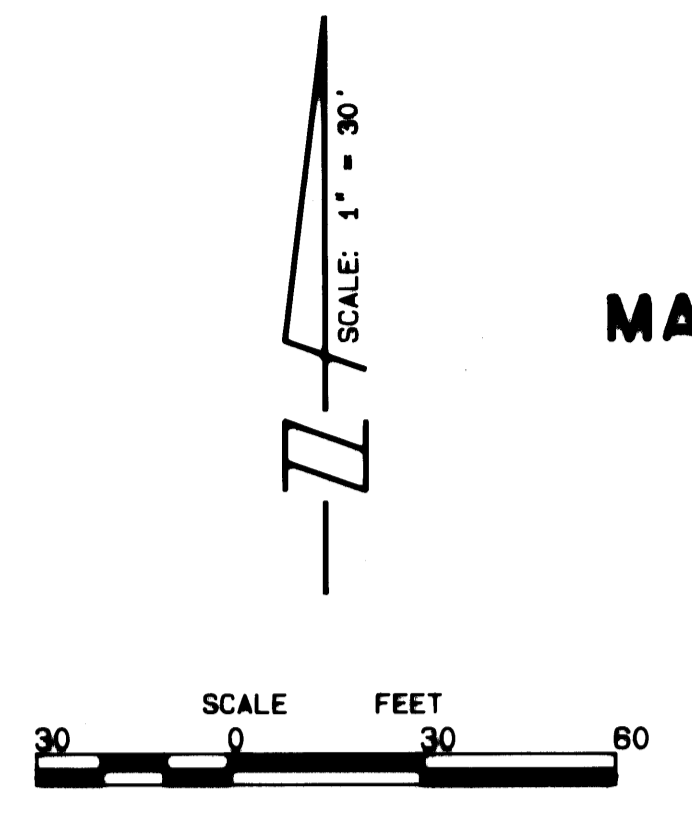
FILED FOR RECORD
MARTIN CO. FLA.
90 OCT 18 AM 10:44
MARSHA STILLER
CLERK OF CIRCUIT COURT
BY D.C.



I, MARSHA STILLER, CLERK OF THE CIRCUIT COURT OF MARTIN COUNTY, FLORIDA, HEREBY CERTIFY THAT THIS PLAT WAS FILED FOR RECORD IN PLAT BOOK 12, PAGE 68, MARTIN COUNTY, FLORIDA, PUBLIC RECORDS, THIS 18th DAY OF Oct, 1990.

MARSHA STILLER,
CLERK CIRCUIT COURT
MARTIN COUNTY, FLORIDA.
BY: *Charlotte Buckley*
DEPUTY CLERK

FILE NO. 851624
(CIRCUIT COURT SEAL)



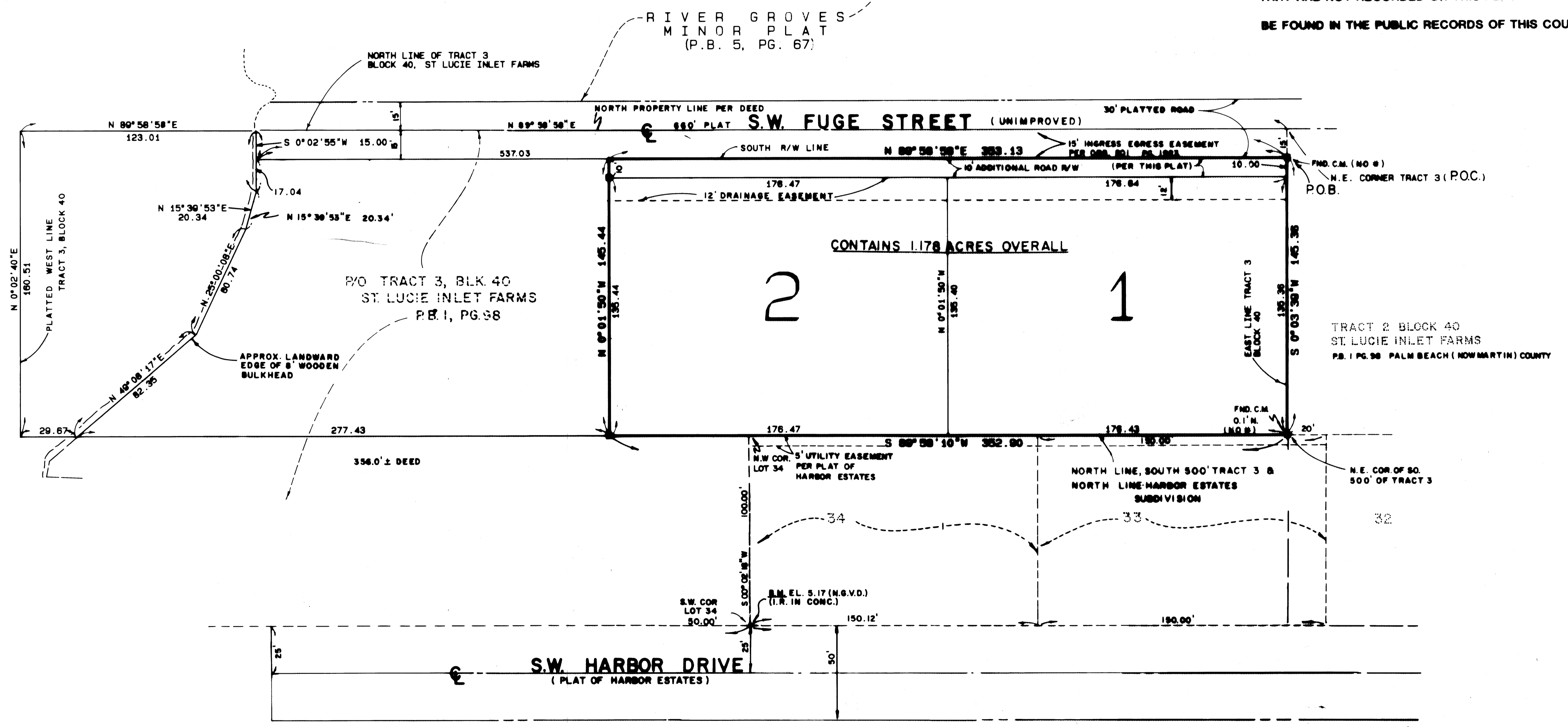
MARCH, 1990

NOTES

- EACH NUMBERED TRACT DEPICTED HEREON IS A LOT.
- THERE SHALL BE NO BUILDINGS OR ANY OTHER KIND OF CONSTRUCTION OR TREES OR SHRUBS PLACED ON DRAINAGE EASEMENTS.
- THERE SHALL BE NO LOT SPLITS EXCEPT TO CREATE A LARGER LOT

NOTICE: THERE MAY BE ADDITIONAL RESTRICTIONS THAT ARE NOT RECORDED ON THIS PLAT THAT MAY BE FOUND IN THE PUBLIC RECORDS OF THIS COUNTY.

SOUTH FORK RIVER
ST LUCIE INLET



LEGEND

- DENOTES FOUND CONCRETE MONUMENT
- DENOTES SET PERMANENT REFERENCE MONUMENT NO. 999 (SET)

THIS PLAT PREPARED BY:
THOMAS C. VOKOUN, P.L.S.
FOR
LINDAHL, BROWNING, FERRARI & HELLSTROM, INC.

BEARING BASE:
THE NORTH LINE OF TRACT 3 IS TAKEN TO BEAR N 89° 58' 10" E AND ALL OTHER BEARINGS ARE RELATIVE THEREBY.

<p>APPROVAL, RECORDING FEE & EXEMPTIONS, SEE Circuit Court Clerk's Office</p>	2	2
---	---	---